



**INTERNATIONAL CASTING SPORT FEDERATION**

**Internationale Castingsport Wettkampfbestimmungen**

**ICW Ausgabe: 1.1.2010**

**International Tournament Rules for Castingsport**

**ICW Edition: 1.1. 2010**

## INTERNATIONAL CASTING SPORT FEDERATION (ICSF)

**International Tournament Rules for Castingsport (ICW)**

Edition: 1.1. 2010

---

<b>CONTENTS</b>		<b>Page</b>
<b>I</b>	<b>Tournaments</b>	3
<b>II</b>	<b>Participation rules</b>	3
<b>III</b>	<b>Amateur definition</b>	4
<b>IV</b>	<b>Changing the nationality of the caster</b>	4
<b>V</b>	<b>Events</b>	4
<b>VI</b>	<b>Rules</b>	
	Event 1 Fly Accuracy	5
	Event 2 Fly Distance Single Handed	6
	Event 3 Spinning Accuracy Arenberg Target	7
	Event 4 Spinning Accuracy	8
	Event 5 Spinning Distance Single Handed	9
	Event 6 Fly Distance Double Handed	9
	Event 7 Spinning Distance Double Handed	10
	Event 8 Multiplier Accuracy	10
	Event 9 Multiplier Distance Double Handed	11
<b>VII</b>	<b>Deviations for Plugs &amp; Lines</b>	
<b>VIII</b>	<b>General Rules for Fly-Casting Events</b>	13
	1 Casting techniques	13
	2 Illegal casts (casts that scores zero)	13
	3 Broken or faulty tackle	14
	4 Determining results	14
<b>IX</b>	<b>General Rules for Spinning and Multiplier Events (plug events)</b>	15
	1 Casting techniques	15
	2 Illegal casts (casts that scores zero)	15
	3 Broken or faulty tackle	16
	4 Determining results	
<b>X</b>	<b>Conduct of the Caster</b>	
<b>XI</b>	<b>Tackle control</b>	17
<b>XII</b>	<b>Official Record Cast</b>	
<b>XIII</b>	<b>Evaluation of the separate Events</b>	
<b>XIV</b>	<b>Rules for Individual, Combinations and Teams scoring</b>	17

<b>XV</b>	<b>Rules for Team competition</b>	19
<b>XVI</b>	<b>Number of Winners</b>	20
<b>XVII</b>	<b>Determining the Winners</b>	20
	1. Winner	
	2. Finals	
	3. Proceeding in the accuracy events	
	4. Proceeding in the distance events	
	5. Same level of points in the accuracy events	
	6. Same level of points in the distance events	
	7. Same level of points in the combinations	
<b>XVIII</b>	<b>Determining the Winners of the Teams</b>	21
<b>XIX</b>	<b>Titles</b>	21
<b>XX</b>	<b>Hail the Winners</b>	21
<b>XXI</b>	<b>Tournament committee</b>	22
<b>XXII</b>	<b>Meeting of heads of delegations</b>	23
<b>XXIII</b>	<b>The Jury</b>	23
<b>XXIV</b>	<b>Protests</b>	24
	1 Protests against violation of tournament rules	24
	2 Protests against violation of rules concerning the conduct of the tournament	24
<b>XXV</b>	<b>Other Rules</b>	24
	1. Purposes and conduct of the judges	24
	2. Purposes and conduct of the international chief judge	
	3 Conduct of trainers and followers	25
<b>XXVI</b>	<b>Groups and group leaders</b>	25
<b>XXVII</b>	<b>Other responsibilities of the arranging organisation</b>	26
	1 Starting booklets	26
	2 Insurance	27
<b>XXVIII</b>	<b>Starting fees</b>	27
<b>XXIX</b>	<b>Drawings</b>	

***INTERNATIONAL RULES FOR CASTINGSPORT TOURNAMENTS***  
***International Castingsport Federation (ICSF).***  
***Edition 2007***

**I: TOURNAMENTS**

The ICSF organises World- and Continental Championships as well as sanctioned international competitions for Men, Ladies and juniors according following these International Casting Tournament Rules. Juniors are allowed to participate as well.

A senior is a caster as from the calendar year they reaches the age of 50 and until the end of the calendar year they reached the age of 59.

A veteran is a caster as from the calendar year they reaches the age of 60.

A junior is a caster up to the end of the calendar year in which they reached the age of 18.

**II: PARTICIPATION RULES**

All National Organisations in good standing organised in the ICSF may take part at ICSF World- and Continental Championships and at all sanctioned International Tournaments.

Excluded are organisations that have lost their membership. Application and notice of participation to World- and Continental Championships may be made up to 3 months before the Championships. Such notice has to carry a copy of receipt for paid fees to the head organisation ICSF

Names of the participants have to be given at least 4 weeks before the World- and Continental Championships. The Final name list has to be tendered at least 24 hours before start of the tournament. Changes are possible to make at the meeting of the delegation leaders.

Changes because of sudden sickness of participants have to be tendered with written notice and a physician's statement to the Tournament Committee before 1 hour in advance of Tournament Opening. (Point of time as stated in the invitation)

All nations and participants are obliged to follow the doping rules set by the doping bureau WADA of the International Olympic Committee's (IOC's).

Result determines a title.

At all World- and Continental Championships each nation may have a maximum of 6 named men in the events 1 to 7, and 3 named ladies in events 1 to 5. From these named participants 4 men and 2 ladies are to be designated for the Team Competition.

For the events 8 and 9 additionally 3 named men and 2 named ladies per nation may take part. Also in these events the maximum of casters is 6 named men and 3 named ladies per nation.

At all Junior World- and Continental Championships each nation may have a maximum 6 named boys in the events 1 to 5 and 3 named girls in events 1 to 5.

From these named participants 4 boys and 2 girls are to be designated for Team Competition.

The highest number of participants at World- and Continental Championships per nation is 9 men, 6 boys, 5 ladies and 3 girls. Reserves are allowed.

If a caster is unable to attend, the reserve may be entered by written notice to the Tournament Committee before 1 hour in advance of start.

World- and Continental Championships are only held for events where at least 6 nations participate for men and 4 nations for boys/ladies/girls.

All the nations that ever have taken part at any World or continental championships are admitted to participate with as many participants as they like at the World championships of the seniors and veterans. A team scoring will be determined in the sanctioned invitation by the ICSF.

### **III: AMATEUR DEFINITION**

As defined by the International Olympic Committee (IOC) in its official version.

All nations and participants are obliged to follow the doping rules set by the doping bureau WADA of the International Olympic Committee's (IOC's).

### **IV. CHANGING THE NATIONALITY OF THE CASTER**

Casters, changing their nationality and their national organisation are barred from any International Tournaments for one year. The change must be reported in each case to the ICSF New admittance must be applied for, by the ICSF when the year has passed. Such a new admittance is only possible if the caster has obtained his new nationality or makes the application plausible.

### **V: EVENTS**

#### Men's division

- Event 1 Fly Accuracy
- Event 2 Fly Distance Single Handed
- Event 3 Spinning Accuracy Arenberg Target
- Event 4 Spinning Accuracy
- Event 5 Spinning Distance Single Handed
- Event 6 Fly Distance Double Handed
- Event 7 Spinning Distance Double Handed
- Event 8 Multiplier Accuracy
- Event 9 Multiplier Distance Double Handed

#### Ladies division

- Event 1 Fly Accuracy
- Event 2 Fly Distance Single Handed
- Event 3 Spinning Accuracy Arenberg Target
- Event 4 Spinning Accuracy
- Event 5 Spinning Distance Single Handed
- Event 8 Multiplier Accuracy
- Event 9 Multiplier Distance Double Handed

#### Boys division

- Event 1 Fly Accuracy
- Event 2 Fly Distance Single Handed
- Event 3 Spinning Accuracy Arenberg Target
- Event 4 Spinning Accuracy
- Event 5 Spinning Distance Single Handed

#### Girls division

- Event 1 Fly Accuracy
- Event 2 Fly Distance Single Handed
- Event 3 Spinning Accuracy Arenberg Target
- Event 4 Spinning Accuracy
- Event 5 Spinning Distance Single Handed

## **VI: COMPETITION RULES**

### **Event 1 Fly Accuracy**

- Rod:** Ordinary one-handed fishing rod maximum length 3.00 metres. Standard rings or guides.
- Reel:** Standard fly fishing reel, or self-made reel corresponding to standard. The reel has to be fastened to the rod, the line has to be fastened to the reel. The reel must carry all backing, the fly line including the leader.
- Line:** Only fly fishing line or similar line approved by the ICSF, minimum length 13.5 metres. Lines with metal and similar inlays are prohibited. Backing is unrestricted (VII, IX 2f). The replacement of the tip of the fly line must be of the same material and the same colour.
- Leader:** Minimum length 1.80 metres. The leader must be of a different material than the fly-line (IX 2b). The tip of the leader should be minimum 30 cm long and max. diameter 0,45mm. Colour: Fluorescent like yellow, orange, neongreen or similar, not transparent.
- Fly:** Any standard tournament fly, size 10, without hook, approved by the ICSF Hackle diameters 16-20mm, to be tied in approved dry-fly style and white, yellow or red. Before starting the event the caster has to show the fly to the judge who decides if the fly is correct or not. In case of loss, flies can be replaced in an unrestricted number. (IX 3a)  
Flies must not be altered.
- Platform:** Minimum size 1.50 metres long and 1.20 metres wide, 0.50 metres height
- Targets:** 5 hollow discs, 0.60 metres diameters, made from plastic or metal, with turned edge 3 cm high. Colour: dark - black, green, blue or brown, filled with water.
- Court:** Disc no 1 to the left of the caster. 8 metres from the upper middle front edge of the platform. Disc no 5 to the right, 13 metres from the upper middle front edge of the platform. Disc 2, 3 and 4 are on a straight line between no 1 and no 5. Disc no 3 is always placed directly in front of the platform. All distances to the targets are to be measured from the upper middle front edge of the platform to the centres of the target discs. Distance between the centres of the target discs have to be 1.80 metres. In front of the targets there is a cloth parallel to the targets fixed by nails or other in the ground. Measures of the cloth: 9, 00 m x 1,00 m. Colour: Blue or green, no dark clours.
- Dry Fly Round:** Caster must start with fly in hand and rod-length fly-line, (no loose fly-line at reel) leader not included. If the line is not pulled in at rod-length, the judge will ask the caster to correct it. After a second demand the caster will be disqualified for this event.  
Dry fly casting one attempt at time on each target in the following order: 3 - 1 - 4 - 2 - 5 - 3 - 1 - 4 - 2 - 5. At least one false cast shall be made between each score or lay of the fly. All ten targets have to be cast to in the consecutive order given or as many as time permits. Fly line may only be shortened or lengthened during false casting, with rod in motion, no stripping of the line from the reel allowed when rod is not in casting motion. Improper strip or shortening of the line shall make the next cast scoring 0 points.  
If the fly touches the cloth in front of the targets or the water in the targets, the scoring will be 0 points

- Wet Fly Round:** Having completed the dry fly round, the caster pulls the fly line back into level with disc no 1. Then the caster makes two rounds, one wet fly cast at a time on each target in consecutive order 1 - 2 - 3 - 4 - 5 - 1 - 2 - 3 - 4 - 5. Line may be pulled in to shorten length between targets no. 5. and no 1., but no blind or false casting allowed between casts on targets.
- Casting:** Should the fly, caused by bad floor or grass conditions, during wet fly round, hang, is it up to the international judge to decide if the caster should be given one more try. (IX 1, 2a,c,e,h,i,j,k 3; 4b,c)
- Time:** Time limit 5 minutes and 30 seconds (IX 3a, c; 4d; XIII a, c; XXV c)
- Score:** Each hit in target scores 5 points. Maximum score 100 points. (IX 4; XI 1)  
The inner part of the edge of the discs to be counted as the target and will score 5 points
- General:** During dry fly- and wet fly-rounds the caster must stand with at least one foot directly adjacent to the front of the platform. (IX 2i,j)

### **Event 2 Fly Distance Single Handed**

- Rod:** One-handed fly-rod, maximum length 3.00 metres.
- Reel:** Any reel. Reel fastened to rod, line fastened to the reel. Reel to carry all backing, the whole fly line including the leader.
- Line:** Any line approved by the ICSF.. Lines with metal or similar inlays are prohibited. (VII; IX 2g)
- Men and Boys:** Minimum length 15.00 metres. Maximum weight 38 gram.
- Ladies and Girls:** Minimum length 13.50 metres. Maximum weight 34 gram.
- Leader:** Minimum length 1.80 metres. Maximum length 3.00 metres. (IX 2b)
- Fly:** Same as event no 1.
- Platform:** Same as event no 1.
- Court:** Casting sector; width at 50 metres distance 25 meters, measured at a right angle to the perpendicular axis from the centre of the front edge of the platform.
- Time:** Time limit 6 minutes. (IX 3a, c 4d; XIII a, c; XXV c)
- Score:** Longest cast to win the event, two longest casts added to score for combination. 1.00 metre = 1 point. (XI 3)
- General:** The line may be pulled out outside the court during the casting of the previous caster (IX 1, 2a, d 3) . The fly must laid down outside of the courts. Corresponding to the technique of fly-distance casting, the whole fly-line must be hold in the air during the forward and backward swinging

### **Event 3 Spinning Accuracy Arenberg Target**

- Rod:** Single handed minimum length 1.37 metres, maximum length 2.50 metres, at least 3 rod rings and a tip ring. Maximum diameters inside bottom ring 50 mm, tip ring 10 mm. Handle not to exceed 1/4 of rod length.
- Reel:** Open-faced spinning reel, standard spool or corresponding type. Reels with changed gear are allowed.
- Line:** Unrestricted, but the same diameters in the whole length. Minimum length 20 metres.
- Plug:** 7.5 gram plastic approved by the ICSF, drop-shaped with an even surface. Length excluding eye 53.0 mm plus/minus 0.3 mm. Diameters of the head 18.5 mm plus/minus 0.3 mm. Diameters of the eye 5.0 mm plus/minus 1 mm. Weight of the plug 7.5 gram, plus/minus 0.15gr including eye. Colour white. (VII)
- Court:** Arenberg target of green coloured ground-cloth or plastic, with 5 concentric rings marked white, maximum 2 cm., of diameters, res. 0.75 – 1.35 - 1.95 - 2.55 - 3.15 metres.. The centre is a flat disc of 0.75 metres diameters, maximum thickness 10mm. and black. It should not lay deeper than the cloth. 5 casting stations to be arranged round the target at 90 degrees. The first and last station are in a straight line from the centre of the target over the target corner. The other three stations are placed between the first and last station. The farthest is if possible with the wind from behind the caster. Each station marked with a starting board, 1.00 metre long and maximum 10 cm height. Colour: white.
- Casting:** From each station 2 casts. The Caster has to start from station 1 with the plug in his hand.

#### Stations and casting-techniques:

Distances must be measured from centre of target and station to be cast from left to right. (X 1, 2a,e,f,g,h,j 3, 4d,e)

Station 1: Distance 10 metres	Underhand pendulous cast.	.
Station 2: Distance 12 metres	Right-hand side cast.	.
Station 3: Distance 18 metres	Over-head cast.	.
Station 4: Distance 14 metres	Left-hand cast.	.
Station 5: Distance 16 metres	Optional style cast.	.

Catapult-casts are not allowed.

**Under-hand pendulous cast:**

This is properly executed when the plug is under the rod by delivery. Minimum length of overhang is 50 cm to the eye of the plug. Any posture of the caster is allowed.

**Right-hand side cast:**

This is properly executed while delivering the cast the rod-tip travel at least 1 metre from the right side of the casting direction and the rod and the casting hand are to the right of the casting direction, which is the line between the centre of the caster and the target centre. The rod tip shall not travel higher than the horizontal plane when delivering the cast. Any posture of the caster is allowed, no matter if the rod is in front or behind the starting board. Dragging of the plug on the ground is prohibited and scores 0 points. Length of pendulum is unrestricted.

- Over-head cast:** This is properly executed when the rod tip before the delivery is over the head of the caster. The rod has to be propelled between the horizontal and the vertical plane. Any length of overhang. Any posture of the caster is allowed.
- Left-hand side cast:** This is properly executed while delivering the cast the rod-tip travel at least 1 metre from the left side of the casting direction and the rod and the casting hand are to the left of the casting direction, which is the line between the centre of the caster and the target centre. The rod tip shall not travel higher than the horizontal plane when delivering the cast. Any posture of the caster is allowed, no matter if the rod is in front or behind the starting board. Dragging of the plug on the ground is prohibited and scores 0 points. Length of pendulum is unrestricted.
- Time:** Time limit 5 minutes in all, moving between stations boards included.  
(X 1, 2a,e,f,g,h,j 3, 4d,e; XIII a, c; XXV c)
- Score:** From centre 10 - 8 - 6 - 4 - 2 points.  
Maximum score 100 points. (XI 1)

#### **Event 4 Spinning Accuracy**

- Rod:** Same as event no. 3.
- Reel:** Same as event no. 3.
- Line:** Same as event no 3.
- Plug:** Same as event no 3.
- Targets:** 5 inclined discs, diameters 0.76 metres, and maximum thickness 10 mm. Colour, yellow.  
Foremost edge 5 cm above ground and the backmost edge 17 cm above the ground.
- Court:** 5 casting stations, beginning from the left shortest distance 10 metres to centre of target, then increasing to the last target at right 18 metres to centre of target. Disc no. 2, 3 and 4 placed on a straight line between 1 and 5. Starting boards like for event no. 3. Discs to be placed and distance measured on the perpendicular from the middle of each starting board. Distance between middle of starting boards 1.50 metres.
- Casting:** From each of the 5 casting stations to the corresponding target from each, casting two casts from each station. The caster goes through to court twice. In all 20 casts, the casting style is free, catapult cast prohibited. (X 1; 2a,e,f,g,h,j; 3; 4d,e)
- Time:** Time limit 8 minutes in all, moving between stations boards included.  
(X 1, 2a,e,f,g,h,j, 3, 4d,e; XIII a, c; XXV c)
- Score:** All hits score 5 points each. Maximum score 100 points. (XI 1)

**Event 5 Spinning Distance Single Handed**

- Rod: Same as event no. 3.
- Reel: Same as event no. 3.
- Line: Minimum diameters 0.18 mm, (no minus tolerance allowed), but with the same diameters in the whole length. Leader minimum diameters 0.25 mm, no minus tolerance allowed. Minimum length of the leader from the reel to the plug has to be at least one complete turn on the reel. (VII). Colour of the leader: see event 1.
- Plug: Same as event no. 3.
- Court: At 100 metres distance, the court is 50 metres wide, measured at a right angle to the perpendicular axis from the centre of the starting board. Starting board: 1.50 metres long and maximum 10 cm height. Colour: white.  
The run for the caster is guaranteed to be maximum 5 metres. (X 2d).
- Casting: Each caster to have 3 casts, one in each of three rounds. Casting style is free (X 1b; 2; 3; 4d,e). Spin-casts are not allowed.
- Time: Every cast must, after the court is declared free by the judge, be delivered within 60 seconds.  
(X 2c 4d; XIII a, c; XXV c)
- Score: The longest of three casts score. 1 metre = 1.5 points. (X 4a,b,c; XI 2)
- General: After being called to the start, the caster has 60 seconds step to the starting-board and to deliver his cast.

**Event 6 Fly Distance Double Handed**

- Rod: Two-handed fly-rod, maximum length 5.20 metres.
- Reel: Same as event no. 2.
- Line: Any line approved by the ICSF. Maximum weight: 120 gram, in whole or spliced from separate bits.  
Lines with metal or similar inlays are prohibited. (VII)  
Minimum length: 15.00 metres.
- Leader: Minimum length 1.80 metres. Maximum length: 5.20 metres. (IX 2b)
- Fly: Same as event no. 1.
- Platform: Same as event no. 1.
- Court: see event. no. 2.
- Time: Time limit: 7 minutes. (IX 3a,c 4d; XIII a, c; XXV c)
- Score: Same as event no. 2.
- General: Same as event no. 2.

**Event 7 Spinning Distance Double Handed**

- Rod: Any rod
- Reel: Any open-faced spinning reel.
- Line: Minimum diameters 0.25 mm, (no minus tolerance allowed), but with the same diameters in the whole length. Leader minimum diameters 0.35 mm, no minus tolerance allowed. Minimum length of the leader from the reel to the plug has to be at least one complete turn on the reel. (VII). Colour: see event 1 and 5.
- Plug: 18 gram plastic, approved by the ICSF, drop-shaped with an even surface.  
 Length excluding eye 68 mm plus/minus 0.3 mm.  
 Diameters of the head 22 mm plus/minus 0.3 mm.  
 Diameters of the eye 6.0 mm plus/minus 1 mm  
 Weight of the plug 18gr, plus/minus 0.3gr.  
 Colour white. (VII)
- Court: Same as event no. 5.
- Casting: Same as event no. 5.
- Time: Same as event no. 5.
- Score: Same as event no. 5.
- General: Same as event no. 5.

**Event 8 Multiplier Accuracy**

- Rod: Any single handed rod, maximum length: 2.50 m
- Reel: Multiplying reel with standard spool.
- Line: Unrestricted, but the same diameters in the whole length. Minimum length: 22 m.
- Plug: Same as event no. 7.
- Targets: Same as event no. 4.
- Court: Same as event no. 4, but beginning from the left shortest distance 12 metres to centre of target, increasing to the last target at the right 20 metres to centre of target.
- Casting: Same as event no. 4.
- Time: Time limit 10 minutes in all, moving between stations included (X 1; 2a,e,f,g,h,j; 3; 4d,e; XIII a,c; XXV c)
- Score: Same as event no. 4. (XI 1)

**Event 9 Multiplier Distance Double Handed**

Rod:	Any rod.
Reel:	Same as event no.8.
Line:	Same as event no 7.
Plug:	Same as event no. 7.
Court:	Same as event no. 5.
Casting:	Same as event no. 7.
Time:	Same as event no. 5.
Score:	Same as event no. 5.
General:	Same as event no. 5. Caster has to leave the starting point within 2 minutes from the finished cast. Otherwise the cast will score 0.

**VII: DEVIATIONS LINES AND PLUGS**

Lines: Event 1	Fly Accuracy	free
Event 2	Fly Distance Single Handed	plus 0.2 gr deviation
Event 6	Fly Distance Double Handed	plus 0.2 gr deviation
Event 5	Spinning Distance Single Handed	no minus deviation
Event 5	Leader 0,25	no minus deviation
Event 7	Spinning Distance Double Handed	no minus deviation
Event 7	The leader 0.35 mm	no minus deviation
Event 9	Multiplier Distance Double Handed	no minus deviation
Event 9	The leader 0.35 mm	no minus deviation
Plugs:	Plastic 7.5 gr	plus/minus 0.15 gr
	Plastic 18 gr	plus/minus 0.30 gr
	Diameters of the eye	plus/minus 1.0 mm

Plugs must not be altered in any way.

In World- and Continental Championships and by all International Tournaments sanctioned by ICSF, are only fly lines approved by the ICSF and plugs procured and controlled by ICSF allowed. Plugs for distance casting have to be distributed before the start and specially marked by the arranging organisation.

## **IX: GENERAL RULES FOR FLY-CASTING EVENTS**

### 1. Casting Techniques

According to the specific rules for each event, the fly rod has to be used by one respectively two hands. It is allowed to achieve a fulcrum by putting the rod against the under-arm, but no fastening is allowed. All other technical aids are prohibited.

### 2. 0-point scoring

A cast is scored with 0 points:

- a) if the rod is not handled according to the rules. In the Fly Distance Events the whole fly line must be in the air while false casting.
- b) if during the delivery the fly or the leader is missing. In case of a leader tangle the leader should be under a required minimum of 1.80 metres, the cast is scored if otherwise correct.
- c) if the caster, during the flight of the fly, touches the ground around the platform, before the fly touches the ground or the target.

### Fly accuracy – event 1

- d) if the fly touches the ground or the target after the time is over,
- e) if during the false casts the fly touches the water inside the target or the cloth in front during false casting, when final cast to score has not been delivered,
- f) if the line is marked, or is measured along the rod by the caster
- g) if in a broken fly line tip is replaced by more than a rod length. Replacements are only allowed in the same material in the same colour.
- h) if the line in event no. 1 is pulled from the reel before the judge has given start clearance
- i) if the caster is not standing with at least one foot directly adjacent to the front edge of the platform

### Fly distance – event 2 and 6:

- j) if the fly settles outside of court,
- k) if in event no.2, a broken fly line tip or a broken fly line end is replaced by more than a rod length. Replacements are only allowed in the same material and in the same colour

Each cast with 0 point-scoring counts for the number of casts allowed. Hits or distances achieved by illegal casts are non-scoring. If any tackle, not in conformity with regulations is being used the caster will be disqualified for the whole event.

### 3. Defect of tackle

- a) Defects of tackle or parts of the tackle are: broken or malfunction of rod or spring and defect reel.
- b) By such an event the time is stopped. The remaining time can, with a changed new tackle according the rules, still be used, but only within the same round. Such defects have to be referred to the international judge of the court.
- c) If the fly or the leader is lost, the caster may be assisted by one person at a time, to replace the fly or the leader.
- d) . If the hackle of the fly is separated from the hook, subject to decision of the judge, the time is stopped off, and the caster or his assistant is requested to put on a new fly immediately. Time starts again as soon as the fly has been replaced, the line must be pulled in after the replacement. Unrestricted number of flies can be used.
- e) The caster may have assistance in order to clear a tangle of the line, lto replace a lost fly or leader or any other malfunctions of the tackle but from one person only at a time Distances and hits before the incident count.
- f) The caster will get 10 minutes to repair a damage.
- g) Each caster is personally responsible for using correct tackle for each event.

### 4. Determining results

- a) The first time the fly hits the target in accuracy event has to be scored for each try. In distance events the cast is measured where fly comes to rest.
- b) Casts may be repeated if there is influence by other persons. This is to be decided by the head judge after advice from the court judges.
- c) Should the fly, caused by bad floor or grass conditions, during wet fly round, hang, is it up to the international judge to decide if the caster should be given one more try.
- d) In fly events time starts when the caster declares to be ready and the judge has given start clearance. Before time is up the fly of the last cast must be resting or having touched the ground or the target.

## **IX: GENERAL RULES FOR SPINNING AND MULTIPLIER EVENTS (PLUG EVENTS)**

### 1. Casting Techniques

If no restrictions in the specified rules for the event are foreseen, any sporting casting techniques are allowed. Generally prohibited are so-called catapult casts, as per definition.

- a) A catapult cast is a cast in which the caster flexes the his rod by holding on the plug, releasing the rod power by letting go of the plug.
- b) Any attempt to cast in while releasing the line counts as a cast.

### 2. 0-point scoring

A cast is scored with 0 points.

- a) if the caster, during the flight of the plug, touches the ground in front of the starting board, or in accuracy events, not is standing with at least one foot directly adjacent to the starting board, while delivering the cast.
- b) if the caster is re-winding the line or stepping over the starting board before the cast is marked in the court or without a request of the judge.
- c) if the caster, in plug distance events, having entered the starting board, fails to deliver his cast before 60 seconds after the court is declared free by the judge. If this limit is exceeded, the cast counts for number of casts allowed in the event.
- d) if the caster, in plug distance events, exceeds the prescript 5 metres run.
- e) if the plug touches the ground inside the court or in front of the starting board or the imaginary line lengthened to both sides of the starting board, even if no cast is delivered.
- f) if a cast is delivered, the caster having forgotten to snap over the bailing wire or line guide in spinning events, or the releasing of spool in multiplying events, even if the plug does not touch the ground.
- g) if the bailing wire or line guide snaps to during delivery in spinning events or the spool is accidentally re-coupled in the multiplying events, even if the plug does not touch the ground.
- h) if during the flight of the plug the line parts or was not fixed to the reel.
- i) if the plug in accuracy events hits outside the target and in distance events the plug comes to rest outside the court.
- j) if the casting technique used is not in conformity with regulations.

Each illegal cast counts for the number of casts allowed. Hits or distances achieved by illegal casts are non-scoring.

If any tackle, not in conformity with regulations is being used, the caster will be disqualified for the whole event. Any changes of the plugs will lead to disqualification for the whole tournament.

### 3. Defects of tackle

During line tangles, the caster may have assistance, from one person only at a time. If the tackle is broken or faulty, in parts or altogether, the caster may continue with another set of tackle in conformity with regulations for the rest of the event. Such defects have to be referred to the international judge of the court. In both accuracy and the distance events, the caster is allowed a repairing time of ten minutes to repairer or change the tackle. By such an event the time is stopped. The remaining time can, with a changed new tackle, still be used, but only within the same round. Defects of tackle or parts of the tackle are: Broken rod or spring and defect reel. No such time is given if a rod ring gets loose or the line gets under the spool. Each caster is personally responsible for using the correct tackle for each event.

### 4. Determining results

- a) In all plug distance events the measuring is done in metres and centimetres between the centre point of the starting board to the furthest edge of the plug. In Arenberg accuracy event scores a hit on a white ring as a hit on the immediate inner ring.
- b) Measuring of distance casts take place after each cast.

c) The judges have to measure and announce the achieved distance of the caster immediately after each cast.

d) Last cast must be finished before time is up, i.e. the plug must have touched target or ground. (Events 3, 4 and 8)

e) Casts may be repeated if they are influenced by other persons. This is to be decided by the head judge after advice from the court judges.

The rules for casting techniques, illegal casts, and defects of tackle as well as determining results are valid for all plug events.

### **X CONDUCT OF THE CASTER**

a) The standing of ICSF is increased according to contributions from of the casters at tournaments, like showing discipline, sporting manners and high performance. This also includes the uniform attire of the athletes. It is compulsory for each caster to act in a sporting and friendly manner and follow all advice from judges and tournament committee. Unsporting demeanour detracts from the standing of the organisation and will be punished, if continued the caster can be disqualified from the tournament.

b) Each caster is responsible for the correctness of his tackle according to the Rules. Continuity in the casting is demanded from each caster.

c) On tournament days training at the tournament site is possible, but only if the process of the event is not disturbed. Any caster acting against the advice from the tournament committee will be warned and if he continues to act against the advice he may be disqualified for the rest of the tournament.

d) Each caster has to appear at the starting place on the first call. The time is running immediately after the start signal of the judge. Time to go to the starting-board and to deliver the cast in event no. 5, 7, 9: is 60 when he has been called by the judge immediately after the measuring of the previous cast. For all the events it is important that, the next following caster will be called also to be prepared for his cast or his round. He has to start his cast or his round immediately when the judge gives the starting signal.

e) If in event 1 the line is longer than rod length by start, the judge should draw the caster's attention to this and warn the caster. If the line is not shortened after the warnings by the judge, the caster will be disqualified for the event.

f) Each caster is obliged to follow the internationally acknowledged regulations on doping settled by the International Olympic Committee's (IOC's), doping bureau WADA.

### **XI: TACKLE CONTROL**

At World- and Continental Championships tackle controls has to be carried out by one international Judge and one assistant supplied by the arranging organisation. The control station has to be close to the courts. In the plug events there should be one person for controlling the lines on two courts. The chosen caster has to be guided with his tackle to the control station at least by a national judge. The chance to be chosen for a tackle control is 1:4. The control will be.

## Fly-events:

Length and the rings or guides,  
 Length and colour of the line,  
 Weight of the fly-line,  
 Weight of the fly-line in event 2 and 6,  
 Length and structure of the leader,  
 Fly,  
 Reel.

## Plug-events:

Length and the rings or guides,  
 Length of the line in event 3,4,8,  
 Length and structure of the leader  
 Weight of the plug,  
 Reel.,

If the caster uses a tackle not according to the rules he will be disqualified for this event if it should happen again he will be excluded for the whole tournament.

**XII: OFFICIAL RECORD CASTS**

1. World and Continental records can only be registered at World- and Continental Championships and at registered International Tournaments. A foreign international judge must be present.
2. If a new record has been cast, the tackle has immediately to be controlled if it is according to the Rules. This control has to be managed by an international judge. The exact time (o'clock) has immediately to be ascertained and marked in the caster's starting book or starting list, the international judge has to countersign. A foreign international judge must approve the correctness of the control.
3. In all distance events no records can be registered if the wind velocity exceeds 3 metres/second. Wind velocity to be measured at the time when the record cast was made. The place for the measuring instrument has to be close to the courts and has to be decided by the tournament committee. Measuring judges at all courts must be able to see if wind velocity is exceeded.
4. A ICSF-protocol signed by at least one member of the tournament committee, has to be forwarded to the Technical Committee of ICSF to get the new record recognised.
5. Records may be cast also in the Finals.
6. At World- and Continental Championships and registered International Tournaments, the actual world records have to be marked off in the court in an easily recognisable manner.
7. World - and Continental records are approved and recognised in following events:
  - a) Event no. 2 Ladies and Men; Girls and Boys
  - Event no. 5 Ladies and Men; Girls and Boys
  - Event no. 6 Men
  - Event no. 7 Men
  - Event no. 9 Ladies and Men

- b) Pentathlon Ladies and Men; Girls and Boys  
 Heptathlon Men  
 All-round Ladies and Men

### **XIII: EVALUATION OF THE SEPARATE EVENTS**

1. In all accuracy events points achieved = points
2. In all plug distance events meters achieved x 1.5 = points
3. In all fly distance events, the best cast counts for the event and the sum of the two best casts for the combination. Meters x 1.0 = points.
4. In all combinations the points scored in the separate events are added together. Sum of points decides.

### **XIV: RULES FOR INDIVIDUAL, COMBINATIONS AND TEAMS SCORING.**

At any World- and Continental Championships, the following events and combinations are to be scored:.

Individual score: Men	Single	events 1 to 9	
	Pentathlon	events 1 to 5	
	Heptathlon	events 1 to 7	
	All round	events 1 to 9	
Individual score: Ladies	Single	events 1 to 5 plus 8 and 9	
	Pentathlon	events 1 to 5	
	All round	events 1 to 5 plus 8 and 9	
Individual score: Boys	Single	events 1 to 5	
	Pentathlon	events 1 to 5	
Individual score: Girls	Single	events 1 to 5	
	Pentathlon	events 1 to 5	
Team scores: Men		events 1 to 5	(4 men)
Ladies		events 1 to 5	(2 ladies)
Boys		events 1 to 5	(4 boys)
Girls		events 1 to 5	(2 girls)

### **XV: RULES FOR TEAM COMPETITION**

1. At all World- and Continental Championships, all team competitions shall be held.
2. Team competitions take place in Pentathlon (events no. 1 to 5).
3. Teams consist of respectively 4 Men/Boys or 2 Ladies/Girls.

4. Names of team members to be finally given at least 24 hours before the start, to the tournament committee. Changes of casters can be announced by heads of delegations at the delegations meeting before the competition starts.

## **XVI. NUMBER OF WINNERS**

a) At any World- and Continental Championships shall the following awards will be given.

1. Individual events. In each event 3 winners: 1st, 2nd and 3rd place.
2. Combinations Men. Pentathlon, 3 winners: 1st, 2nd and 3rd place.  
Heptathlon 3 winners: 1st, 2nd and 3rd place  
All-round, 3 winners: 1st, 2nd and 3rd place.
3. Combination Ladies. Pentathlon, 3 winners: 1st, 2nd and 3rd place.  
All-round, 3 winners: 1st, 2nd and 3rd place.
4. Combination Boys. Pentathlon, 3 winners: 1st, 2nd and 3rd place.
5. Combination Girls. Pentathlon, 3 winners: 1st, 2nd and 3rd place.

6. In all individual events and combinations, the 1st, 2nd and 3rd place winners receive gold respectively silver and bronze medals. In all the individual events the awarding will also be done by diplomas for all finalists and for the six best of the combinations..

7. Team evaluation. The best team of men, ladies, boys and girls is the winners and receives the Trophy of Nations. All members of the teams including trainers are designated winners.

b) At any sanctioned International Tournament might the following awards be given.

1. Individual events. In each event 3 winners: 1st, 2nd and 3rd place.
2. Combinations Men. Pentathlon, 3 winners: 1st, 2nd and 3rd place.  
Heptathlon, 3 winners: 1st, 2nd and 3rd place  
All-round, 3 winners: 1st, 2nd and 3rd place.
3. Combination Ladies. Pentathlon, 3 winners: 1st, 2nd and 3rd place.  
If event 1 -5 & 8+9 All-round, 3 winners: 1st, 2nd and 3rd place.
4. Combination Boys. Pentathlon, 3 winners: 1st, 2nd and 3rd place.
5. Combination Girls. Pentathlon, 3 winners: 1st, 2nd and 3rd place.

6. Team evaluation. The best team of men, ladies, boys and girls are the winners and receive a Trophy. All members including trainers of the teams are designated winners.

## **XVI: DETERMINING THE WINNER**

1. The winner is the caster who achieves the highest points score in an individual event or combination of events.

2. Finals:

- a) In every individual event the winner is determined by a final. The best six women and the best 8 men are qualified for the finals
- b) All finals in the events 1-4, 6 and 8 are to be cast at the same time and in the same conditions. The finals for the plug distance events 5, 7 and 9 will take place on a court chosen by the International Chief Judge.
- c) The casting courts will be taken by the caster in the reverse order of the achieved results in the qualification round, like f. ex. men division: court 1 – caster place 8, court 2 – caster place 7. If there are more casters than courts in any event, the available courts are drawn out to groups with the same number of casters beginning in the reverse order of the achieved results in the qualification round, f. ex.: 8-5 and 4-1.
- d) The results in all finals determine the numerical order of the winners. The results of the qualification round is scored for any combination or team event.

### 3. Proceeding of the accuracy events 1, 3, 4 and 8:

- a) During all accuracy rounds, the time must be taken already in the qualification round in order to determine the participants of the finals; (XVI, 2 b) and c).

### 4. Proceeding of the distance events:

- a) For the fly-distance events 2 and 6 the casting courts will be taken by the caster in the reverse order of the achieved results in the qualification round, like f. ex. men division:; (XVI, 2 c).
- b) The finals in the plug-distance events 5, 7 and 9 will be held on one court chosen by the International Chief Judge. The order of the casters will be the reverse order of the achieved results in the qualification round, place 8 to 1.

### 5. Same level on points of two or more casters in accuracy events 1, 3, 4, and 8:

- a) If there are two casters or more who have the same result in the qualification round or in the finals the winner is the caster with the best result in the shortest time. If the result and the time are still the same, there will be a new final round.

### 6. Same level on points of two or more casters in distance events 2, 5-7 and 9:

- a) If two or more casters have the same distance, the second or even the third longest cast will decide. If all three casts are the same, there will be a new final round.

### 7. If two or more casters have the same points score in any combination:

- a) If two or more casters have the same number of points in any combination, the first respectively, second and third place is shared by the casters. The same rules apply for teams; (XVIII, 2.).

## **XVIII: DETERMINING THE WINNERS OF THE TEAM**

- 1. For the team competition the results of the events no. 1 to 5 (Pentathlon) decide the team result. The team result is the sum of the added points achieved by each member of the team in each of the 5 events.
- 2. Winner of the team competition is the team whose members together have achieved the highest number of points.

3. If two teams or more have the same team score, the first respectively, second and third place is shared by the teams.

### **XIX: TITLES**

1. Every starting caster has according his achieved results, the possibility to receive a World- respectively Continental Championship title.
2. At all championships the winner or the winning team is designated champion of that particular event or combination of events.
3. The title to be given is: World- respectively Continental Champion of the event, or the combination of events, or the team combination, with particulars of the event or the combinations and the result added.

### **XX: HAIL THE WINNERS**

1. Hoisting of the National Flags. The sport's tournaments are subject to the Olympic Idea and are brought forward through the principle of Friendship between Nations. To express this thought, the National Flags of the participating nations are hoisted at all important international tournaments. The organiser may ask participating nations to bring the required flags and national anthems. The organizer can give guidelines concerning the size of the flag
2. The winners receive in formal manner the medals in gold, respectively silver and bronze and the diplomas, showing their achieved title or place. In all events the national anthem of the winning nation is played in connection with the gold medal, when the medals have been given. In honour of the first their national flags hoisted together.

### **XXI: TOURNAMENT COMMITTEE**

- a) World- and Continental Championships are administrated through ICSF or by any person appointed by ICSF. It has full responsibility for the proper organisation and administration of the world and continental championships, according to these international casting-sport tournament rules (ICW).
- b) The tournament committee has to have at least 5 members, 4 to be named by the country arranging the tournament. The fifth member is the international chief judge as representative of the ICSF.
- c) The head of the tournament administration is named by the country arranging the tournament.
- d) During the tournament the ICSF as organisation is represented in their controlling function by the international chief judge and his assistant. These persons are nominated by ICSF and the the assistant by the organising national federation and are responsible to the ICSF.
- e) The chief judge and his assistant are heading the international and national judges. They have to cooperate and share the duties on the fields and in the bureau. The final decision is up to the international chief judge.
- f) The chief judge and his assistant must speak English and/or German.

g) The World- and Continental Championship are officially completed, when the tournament committee and the jury receive discharge by ICSF.

**The tournament committee is responsible to the ICSF in all its following tasks:**

- a) The technical preparations and the conduct of the events.
- b) The training and instruction of the judges.
- c) The conduct of the tournament according to the international casting tournament rules.
- d) The forming of groups and the time schedule for the competitions.
- e) The controlling of the courts under the direction of the international chief judge who will acknowledge the proper conditions of the court 10 minutes before start of the particular event and report to the tournament committee.
- f) Instructions to group leaders.
- g) Providing facilities for training before the tournament.
- h) Correct scoring of results and records.

**XXII: MEETING OF THE HEADS OF DELEGATIONS**

At World- and Continental Championships a meeting of the heads of delegations has to be held at least the day before the official opening of the tournament. A complete starting list with the groups and the time schedule and a list with the announced teams and their members has to be provided for this meeting. If the meeting is held prior to 24 hours before first event starts at stated (o'clock) by official program, heads of delegations can announce changes of casters.

**XXIII: THE JURY**

A jury has to officiate at all World- and Continental Championships as well as at all sanctioned International Tournaments. The jury shall at all World- and Continental Championships have 5 members and two substitutes, none of them to cast in the tournament and at all sanctioned International Tournaments have 3 members and one substitute, none of them to cast in the tournament. The members of the jury have to be present during the whole tournament. The substitutes have to replace members of the jury who's countries are involved in a protest or if one member falls ill. If there are no substitutes, A substitute has to be nominated immediately. This nomination should be done by an immediate meeting with the heads of delegations.

**Tasks of the jury:**

- a) Decide upon protests founded upon violations of the tournaments Rules, or the Rules for the conduct of the tournament.
- b) The jury has to be called immediately after receiving the protest and has to decide in the shortest possible time.
- c) The country lodging a protest and the country concerned are entitled to be present at the jury meeting, up to the moment of voting. Both parties have to be heard during the negotiations.
- d) Votes to be counted by simple majority.

- e) Decisions by the jury are final.
- f) In case of protests against tournament rules, the chief judge and the judge of the specific event have to give evidence before decision. Other witnesses may be called.
- g) A written protocol has to be kept about each protest and jury meeting. The original has to be sent to the Technical committee of ICSF after the tournament.
- h) The tournament committee has to be informed immediately about the handling and decisions of protest.
- i) The jury has exclusive right, after discussing the matter with trainers and team captains present, to stop casting of an event if weather conditions are severely adverse, such as thunderstorms, and order a new start.

## **XXIV: PROTESTS**

### 1. Protests against violation of tournament rules

- a) Every caster participating has the right to appeal decisions of the judges through a protest. The protest must be forwarded in written form in English or German to the jury and has to be signed by the team captain respectively trainer and the caster.
- b) The protest has to be forwarded within 30 minutes after recognition of the protest.

### Protests against violation of rules concerning the conduct of the tournament

Any protests against violation of rules concerning the conduct of the tournament have to be forwarded in written form to the jury by the head of delegation.

- b) Protests have to be decided before the tournament committee receives discharge by the ICSF

## **XXV: OTHER RULES**

### 1. Duties and conduct of the judges

- a) In all World- and Continental Championships one international judge will, in addition to the national judges, officiate at each court.
- b) At World- and Continental Championships should the International Chief Judge and his assistant, the International Judges and the National Judges all be dressed in uniformed dresses, thus in different colours for each group.
- c) All functionaries (judges, secretaries etc.) are obliged to act correctly and without prejudice. They should be characterized with at least arm bands or some token of their task.
- d) In all events with time limits, the judges have to inform the caster of the time still left for the event. such as the last minute, last 30 seconds and then all 5 seconds.
- e) The judge will start the event. At “Start1” time begins to run. If the time allowed is exceeded, the stop watch has to be shown to the caster on his demand.

- f) The judges have to announce the achieved result of each cast, except during the fly distance-events 2 and 6. At continental and international championships, the result of each cast must be shown on a result-board.
- g) The judges should take a stand that they can observe the court respectively the targets and the caster, but never in front of the targets.
- h) At any world- or continental championships the decision about achieved points for each cast is drawn by the international judge at the court.
- i) The judges are obliged to control the tackle according to the Rules.
- j) At world- or continental championships the international chief judge (at international tournaments a member of the tournament committee), together with the judges at the court, decides if a cast may be repeated because of undue influence by third persons.
- h) The chief judge is entitled to give warnings to the caster because of disciplinary misdemeanours; even to issue disqualifications. Such warnings have to be set down in the tournament protocol.

## 2. Duties and conduct of the international chief judge:

- a) He is responsible to the ICSF for the correct conducting of the competition on the sport-ground.
- b) He is responsible for the national and the international judges.
- c) He is responsible for the correct construction of the courts.
- d) He is responsible for the tackle control.
- e) He supervises the time schedule.
- f) He calls the judges to the courts.
- g).He releases the each event.
- h) He calls the finalists on their courts
- i) He starts end stops the finals.
- j) Only he can issue warnings or disqualifications.

His assistant helps and supports him in all duties.

## 3. Conduct of trainers and coaches

All the trainer heads of delegation and other responsible have to be reachable on the sport facilities during the days of competition.

- a) It is forbidden for trainers, coaches and all other persons (casters or audience), to move into the area of the courts and to distract casters. The trainer may only give advices and information about casting technique, time, scores and conditions to his caster at any time.
- b) During the casting of the fly events only one assistant in the court in a time is allowed to support and to help the caster to solve problems with his equipment (rod, reel, line, leader, fly). Any

misconduct may be punished by disciplinary action by the tournament committee or the chief judge, lead only by sporting principles.

## **XXVI: GROUPS**

- a) The forming of groups will facilitate the organisation of the tournament and accelerate it's carrying out. The caster will be able to concentrate on competition and improve his result.
- b) The forming of groups is the responsibility of the tournament committee of the arranging organisation. The groups are numbered.
- c) For each event the groups could be of different size. The maximum for any group is 25 casters.
- d) No caster must cast off his group. Starting order for the groups is regulated in start- and time tables. Starting order for each caster inside his group must be maintained, but each group has to cast on the appointed court.
- e) Every caster in a group is personally responsible for his presence at the start. He should therefore report to the casting stations whenever he leaves the group.

## **XXVII: OTHER RESPONSIBILITIES OF THE ARRANGING ORGANISATION**

- a) Every invitation to World- and Continental Championship or to sanctioned International Tournaments must include a guarantee that the international casting tournament rules and statues of ICSF will be followed.
- b) Events should if possible be cast in numerical order. Any other numerical order must be approved by ICSF At World- and Continental Championships the medals must be presented in the same order as the events are cast.
- c) At World- and Continental Championships or at any sanctioned International Tournaments, arranging organisation has the responsibility that all casters will cast every event in the same time period and under the same conditions.
- d) At World- and Continental Championships and at outdoor sanctioned International Tournaments the casting events are only allowed on grass, the grass not to be higher than three centimetres. Five centimetres is allowed during plug distance events.
- e) All side lines have to be laid out at the ground.
- f) The casters have to be provided with bibs, to be carried by the caster on their upper bodies in an easy recognizable way.
- g) All courts should, if possibly, be placed with the wind from the back.

### **1. Start lists**

- a) The organizer prepares an identical start list with a copy for each event. This start list must contain the name of the caster, his start number and his nationality.
- b) The start lists have to be sorted after evaluation, bound together and kept together with the score sheets until the next World- or Continental Championships by the tournament committee.

c) Errors in numbers or scores have to be marked through so they are still legible and new numbers correctly marked. Any such change or correction has to be signed by an international judge in a legible way.

d) If the original is lost the duplicates is binding.

## **2. Insurance**

a) Every caster should be careful during the casting. The courts should be safe guarded so no accident may occur to the casters or spectators. Spectators and casters not at the start must not enter any court.

b) To be safe guarded against claims by accidents of the casters or third persons, the arranging organisation should carry insurance against accidents. At all World- or Continental Championships and at all International Tournaments, a physician or medical personal should be available.

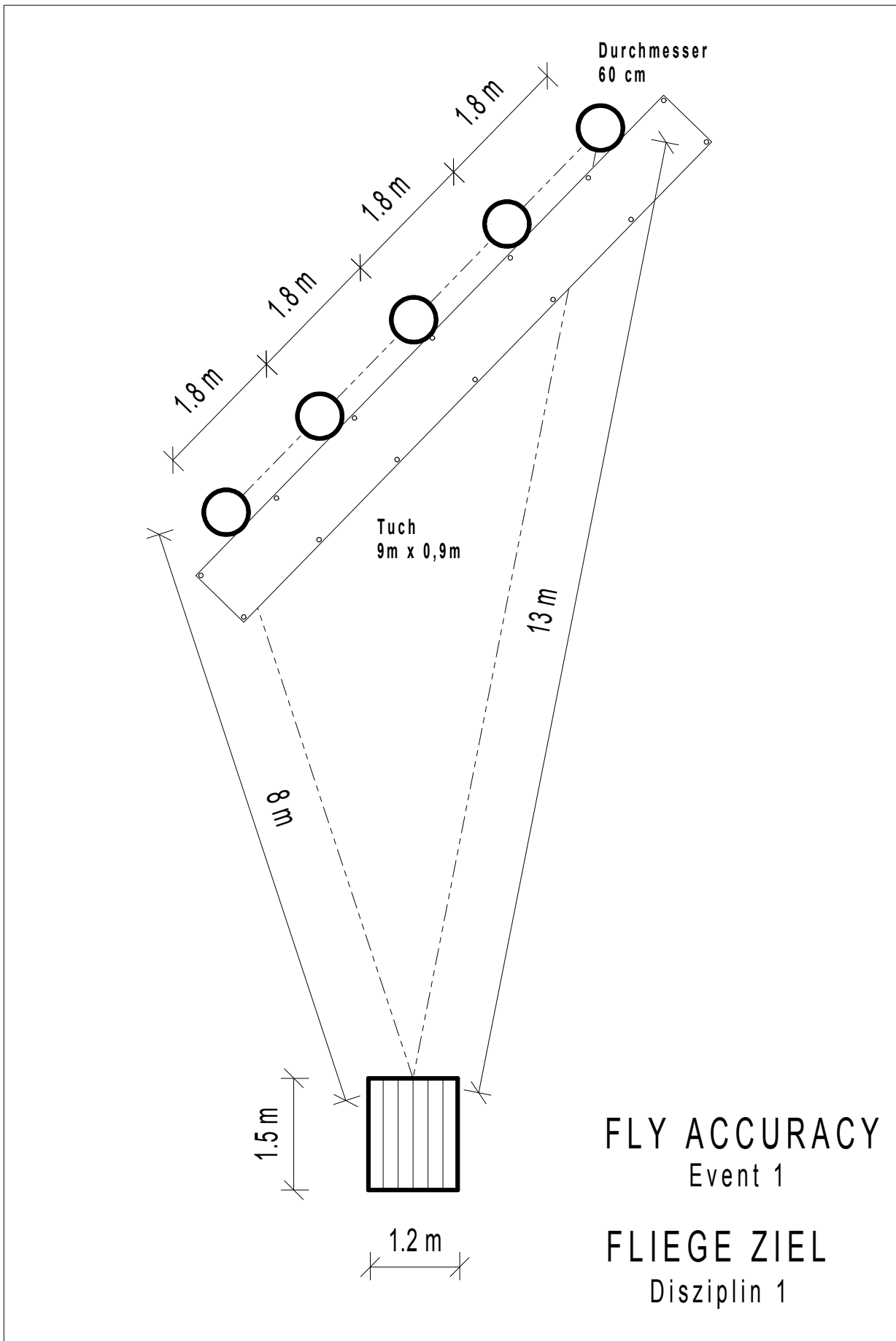
## **XXVIII: STARTING FEES**

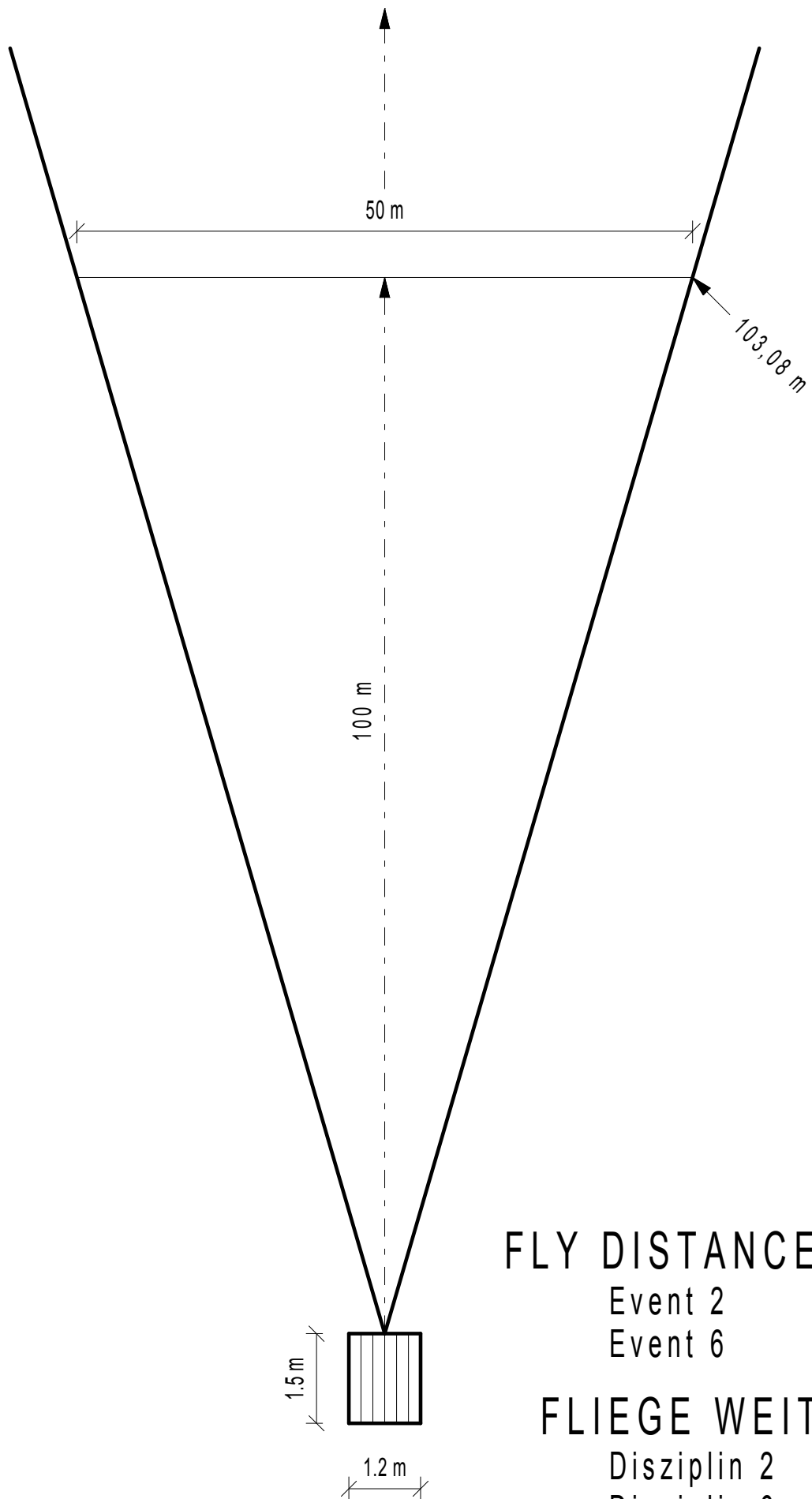
For all active casters, a starting fee for each event should be paid and each national team a booking fee, by World- and Continental Championships. The amount has to be decided by ICSF together with the arranging organisation.

These fees are among other things to cover the costs for the international judges named for World- and Continental Championships by the Technical committee by ICSF

Every, at World- and Continental Championships, participating nation is obliged upon demand by the arranging organisation to participate with one international judge. The travelling costs to be covered by the nation and the accommodation costs by the arranging organisation.

BERLIN, GERMANY	, JANUARY 29, 1994
Revised DÜBENDORF, SWITZERLAND	, JANUARY 21, 1995
Revised NOVE ZAMKY, SLOVAKIA	, JANUARY 14, 1996
Revised STOCKHOLM, SWEDEN	, JANUARY 26, 1997
Revised NOVE ZAMKY, SLOVAKIA	, JANUARY 29, 2000
Revised BERLIN, GERMANY	, JANUARY 27, 2001
Revised by Dr. R. Schuster, I.C.F. Board and FCS Board	, FEBRUARY, 2002
Revised VIENNA, AUSTRIA	, APRIL, 13, 2003
Revised MALMÖ; SWEDEN	, SEPTEMBER 2007
Revised PRAG CZECH REPUBLIC	, APRIL 2009
Revised PRAG CZECH REPUBLIC	, NOVEMBER, 2009





**FLY DISTANCE**

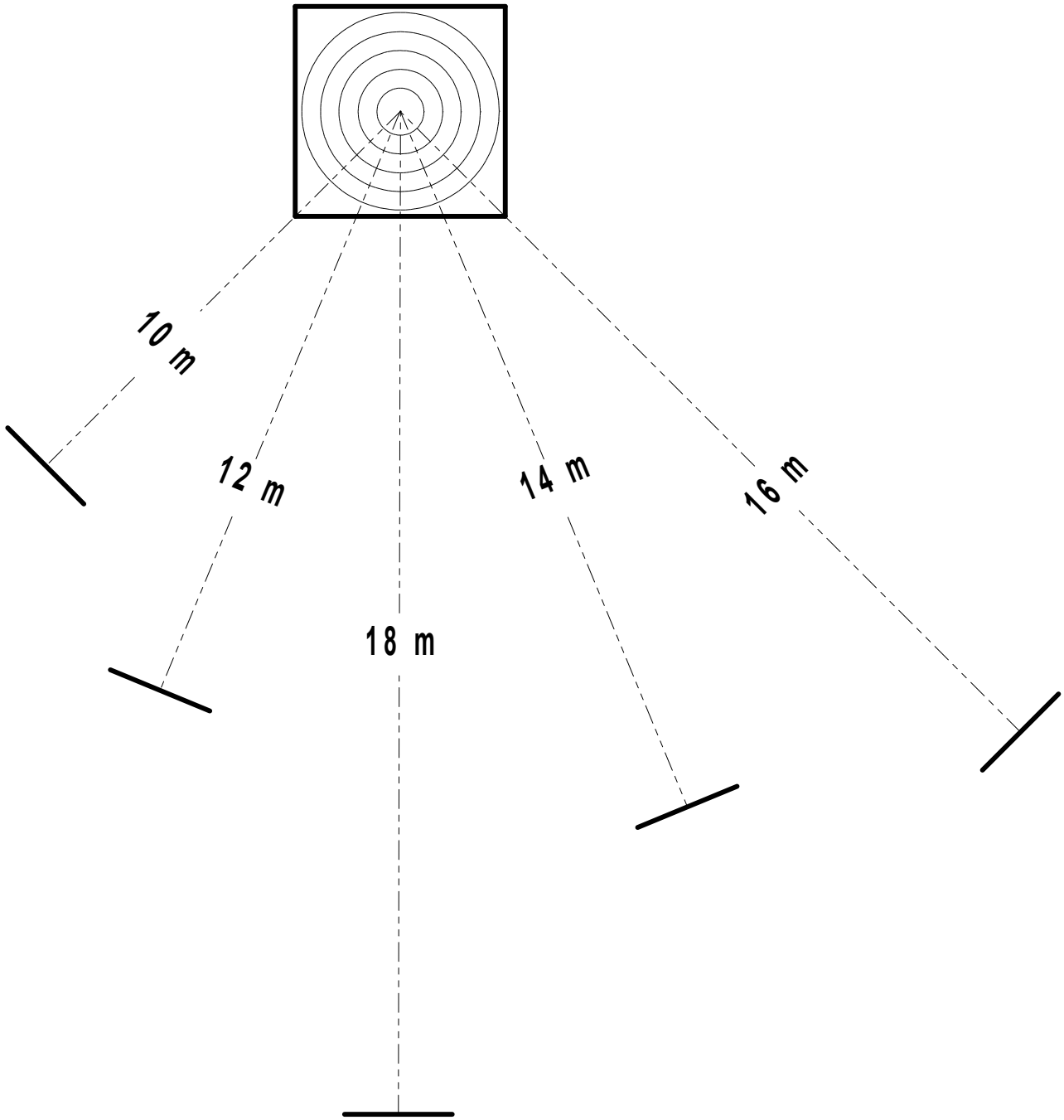
Event 2

Event 6

**FLIEGE WEIT**

Disziplin 2

Disziplin 6

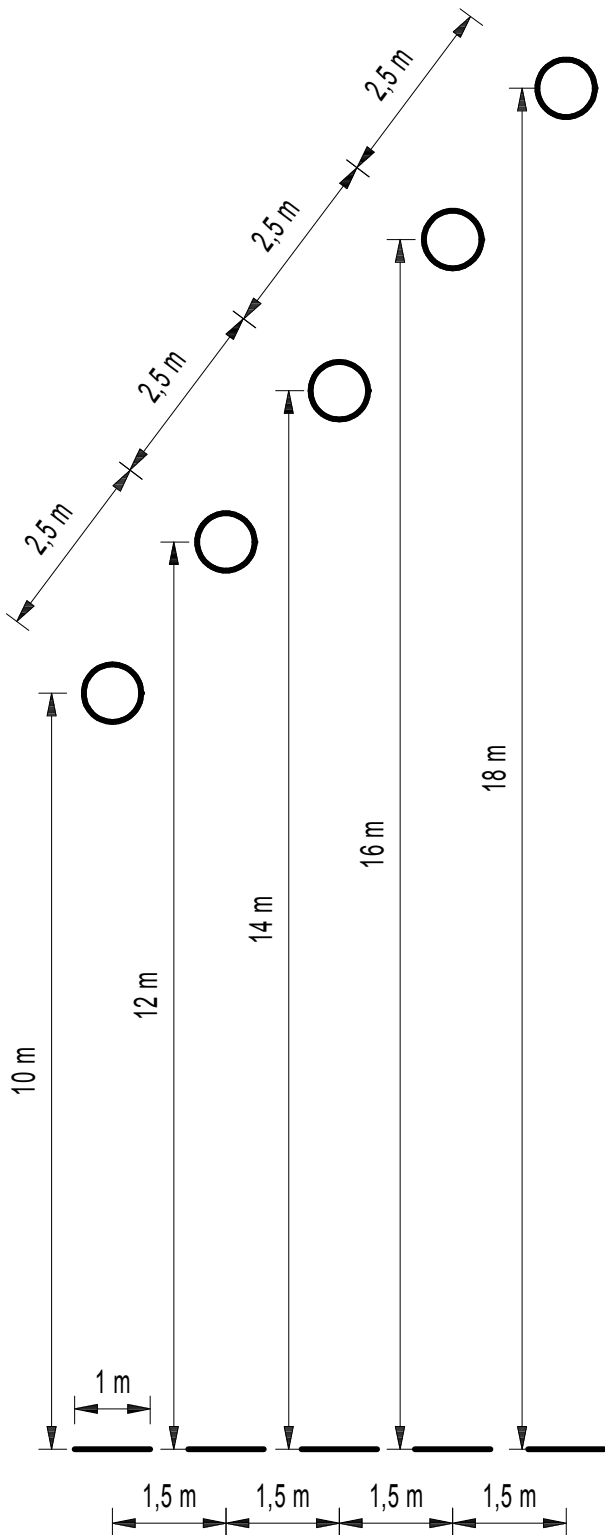


# SPINNING ACCURACY ARENBERG TARGET

Event 3

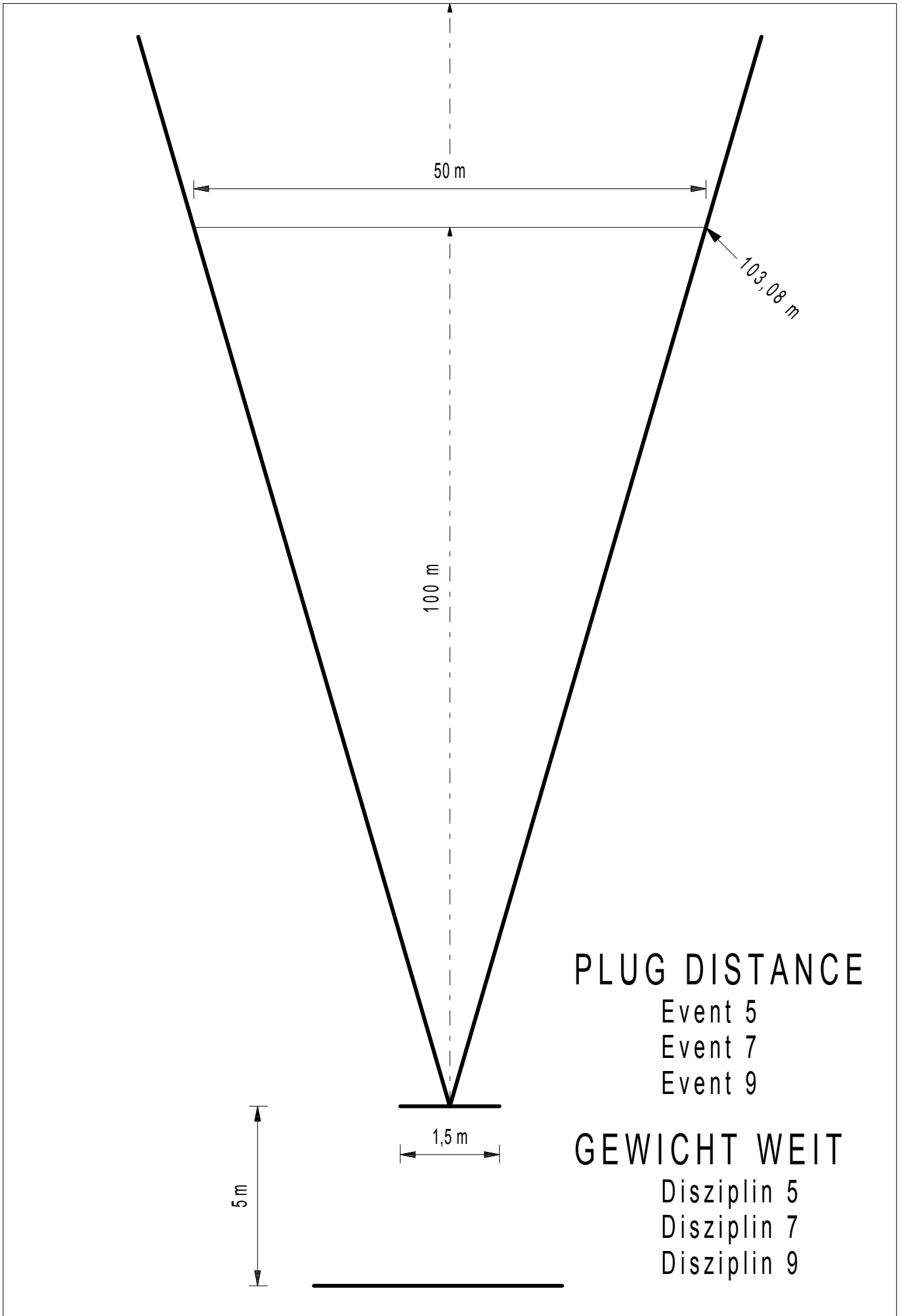
# GEWICHT PRÄZISION

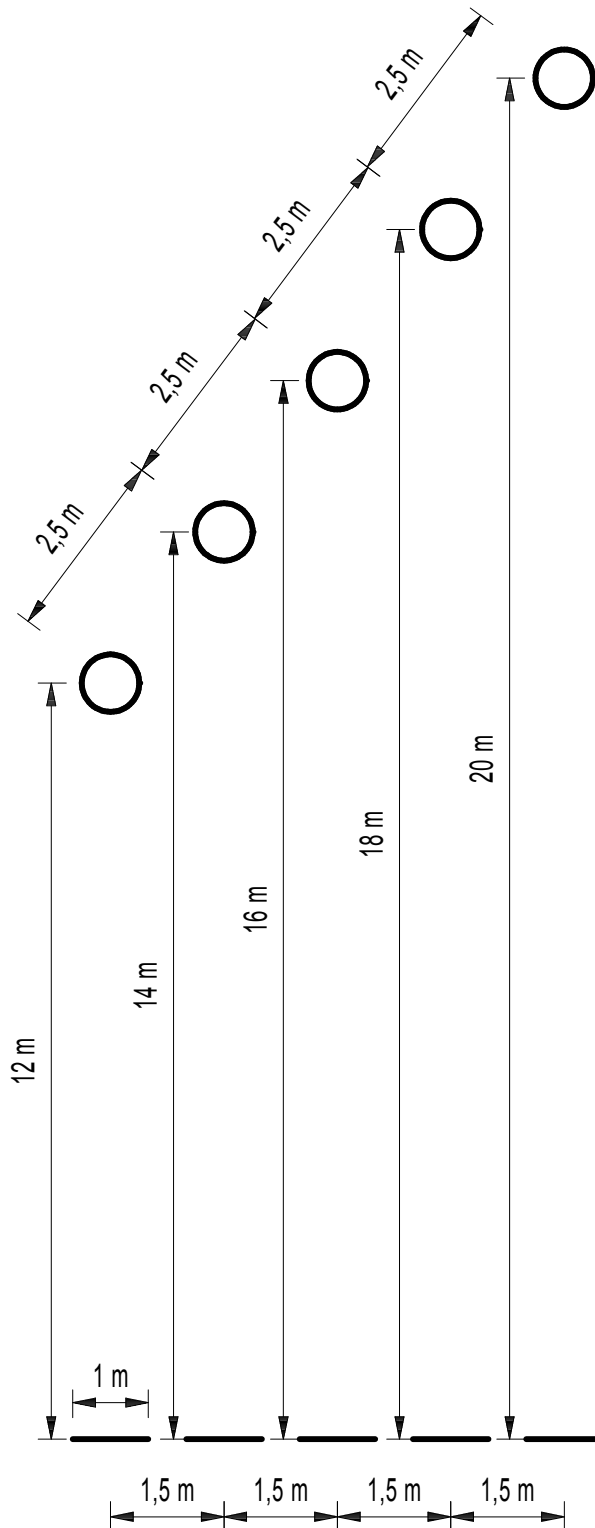
Disziplin 3



**SPINNING ACCURACY**  
Event 4

**GEWICHT ZIEL**  
Disziplin 4





# MULTIPLIER ACCURACY

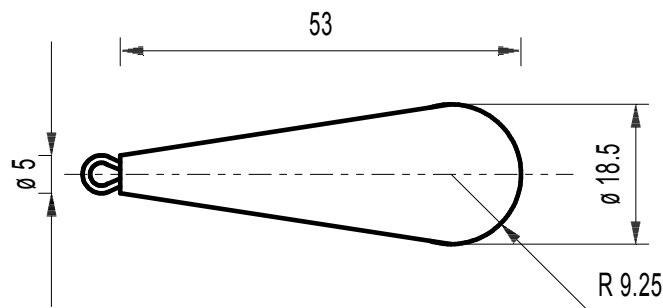
Event 8

## MULTI ZIEL

Disziplin 8

**7.5 gr Plug**

**7,5 g Gewicht**



### Deviation

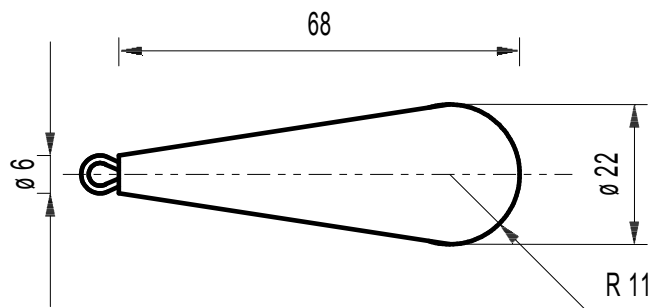
Length	+/- 0,3 mm
Diameter of the head	+/- 0,3 mm
Diameter of the eye	+/- 1 mm
Weight	+/- 0,15 gr.
Colour	white

### Toleranzen

Länge	+/- 0,3 mm
Durchmesser des Kopfes	+/- 0,3 mm
Durchmesser der Öse	+/- 1 mm
Gewicht	+/- 0,15 g
Farbe	weiss

**18 gr Plug**

**18 g Gewicht**

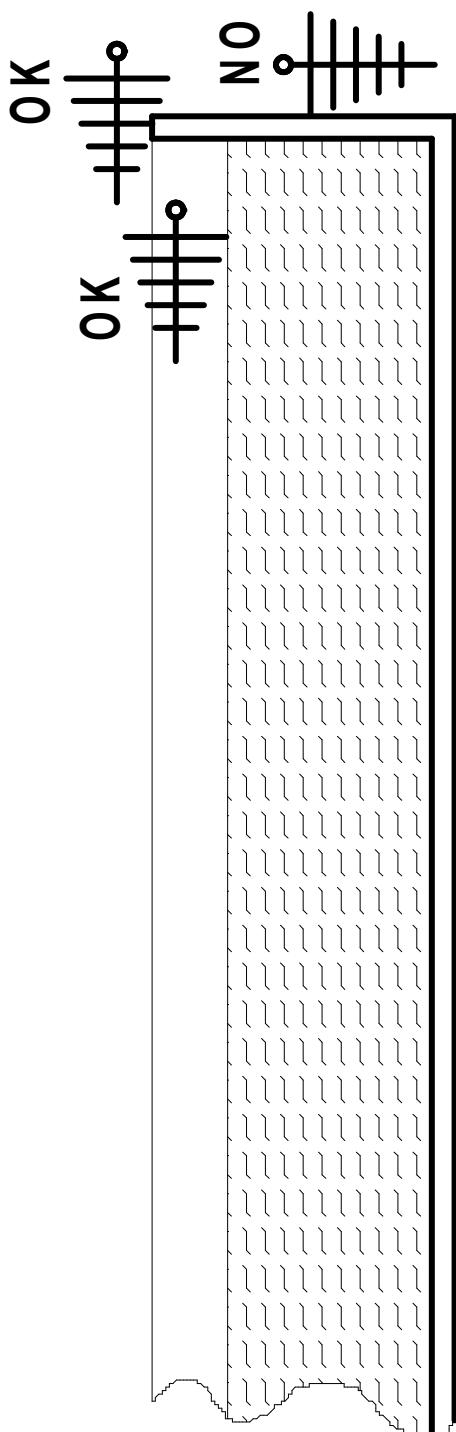


### Deviation

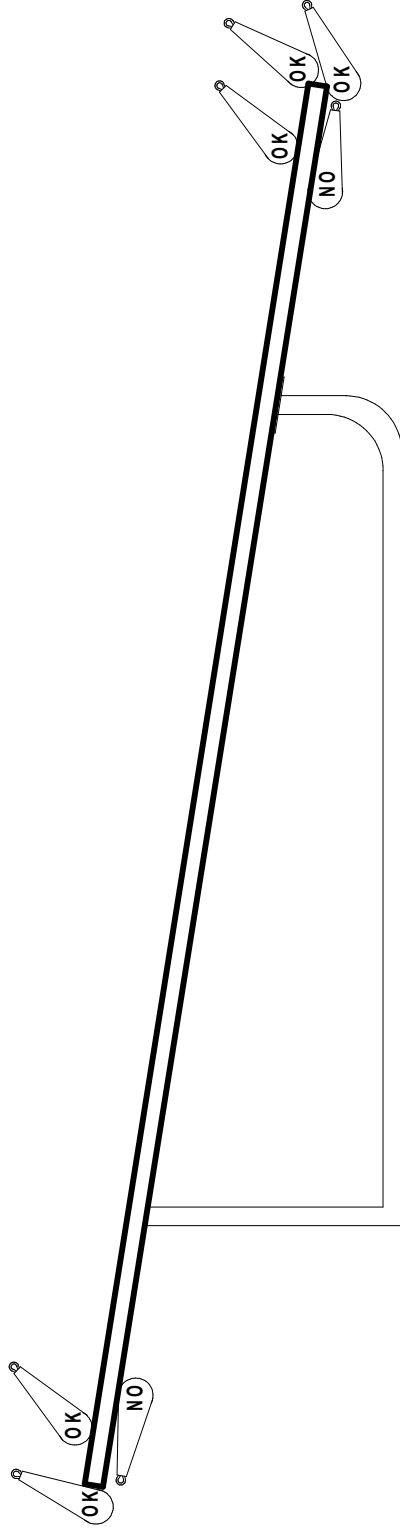
Length	+/- 0,3 mm
Diameter of the head	+/- 0,3 mm
Diameter of the eye	+/- 1 mm
Weight	+/- 0,3 gr.
Colour	white

### Toleranzen

Länge	+/- 0,3 mm
Durchmesser des Kopfes	+/- 0,3 mm
Durchmesser der Öse	+/- 1 mm
Gewicht	+/- 0,3 g
Farbe	weiss



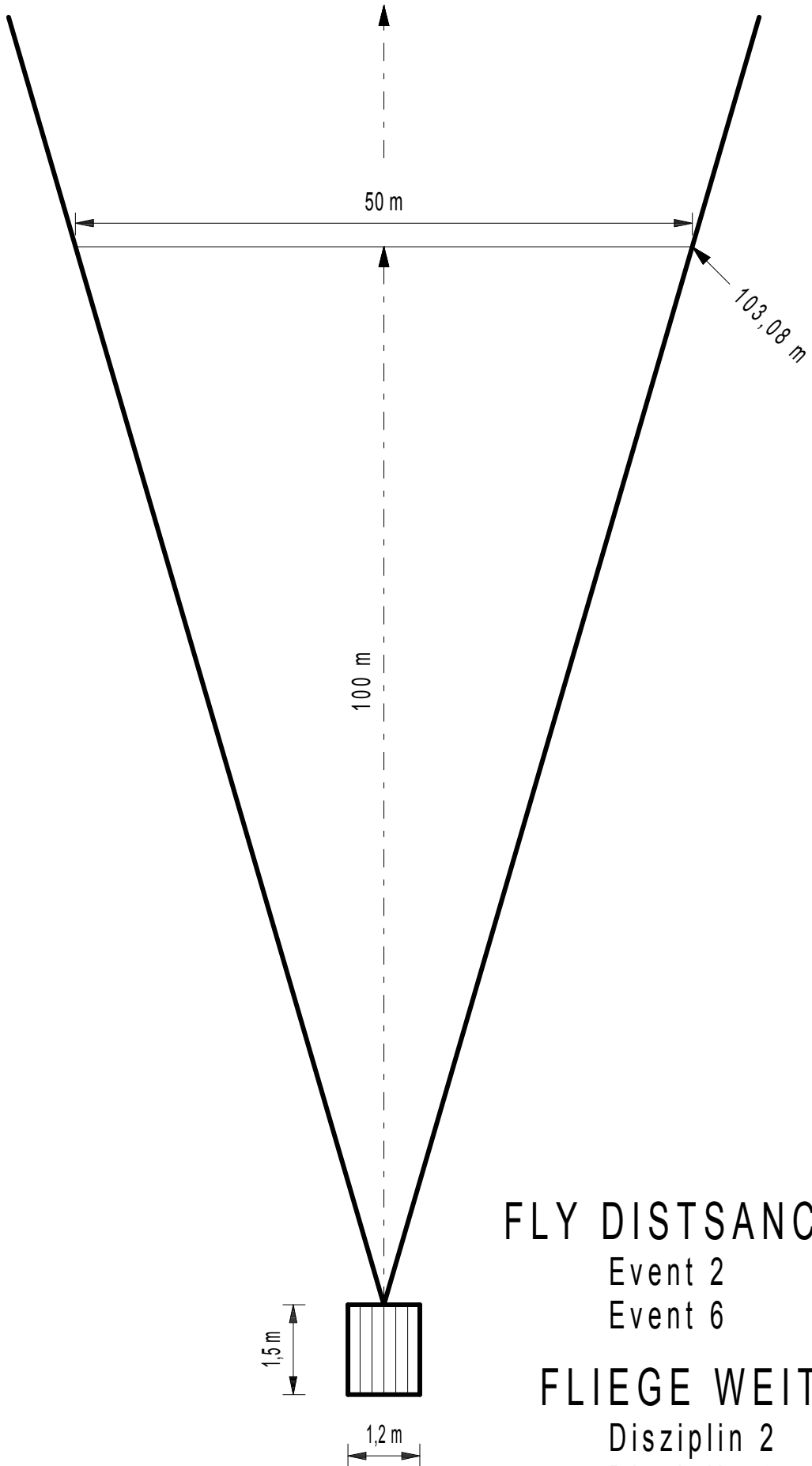
**EVENT 1 FLY SKISH**  
**DISZIPLIN 1 FLIEGE ZIEL**



**EVENT 4 SPINNING ACCURACY  
DISZIPLIN 4 GEWICHT ZIEL**

**EVENT 8 MULTIPLIER ACCURACY  
DISZIPLIN 8 MULTI ZIEL**





# FLY DISTANCE

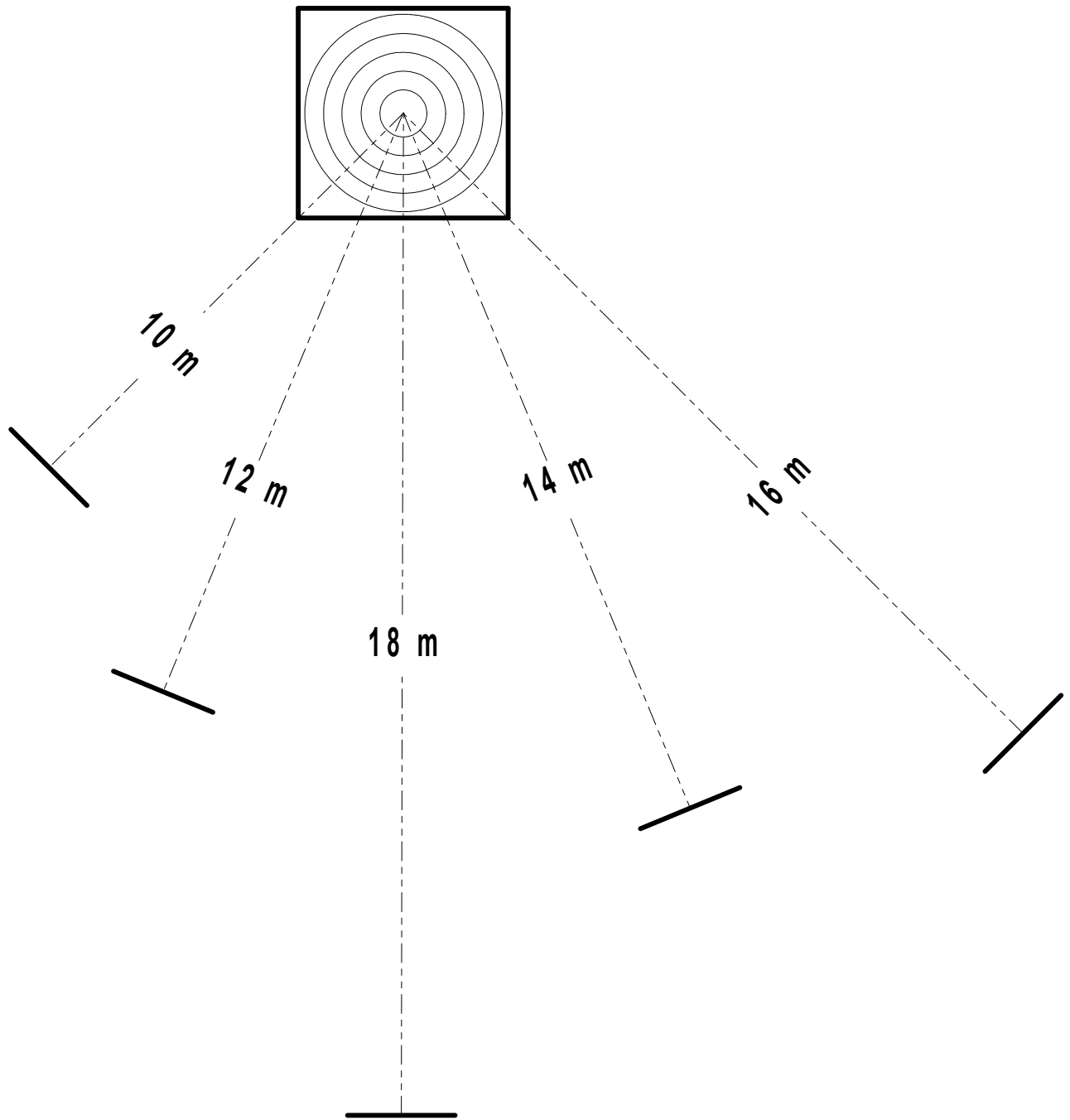
Event 2

Event 6

# FLIEGE WEIT

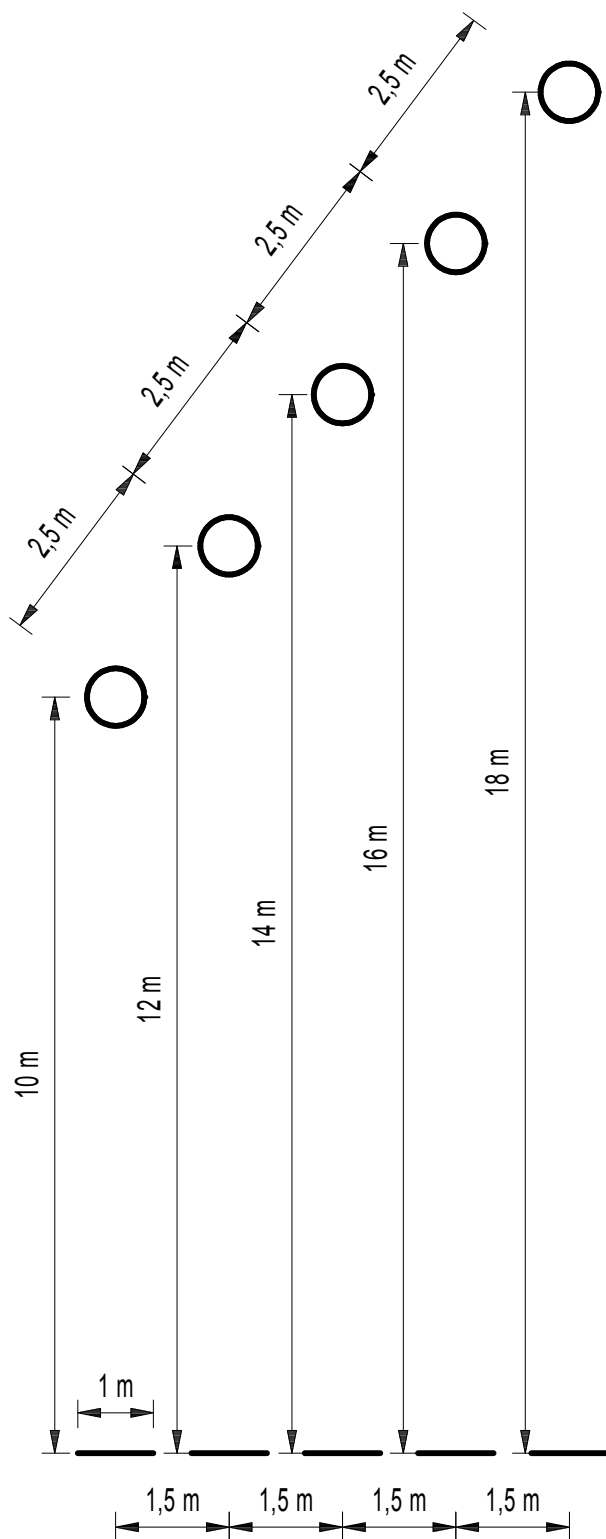
Disziplin 2

Disziplin 6



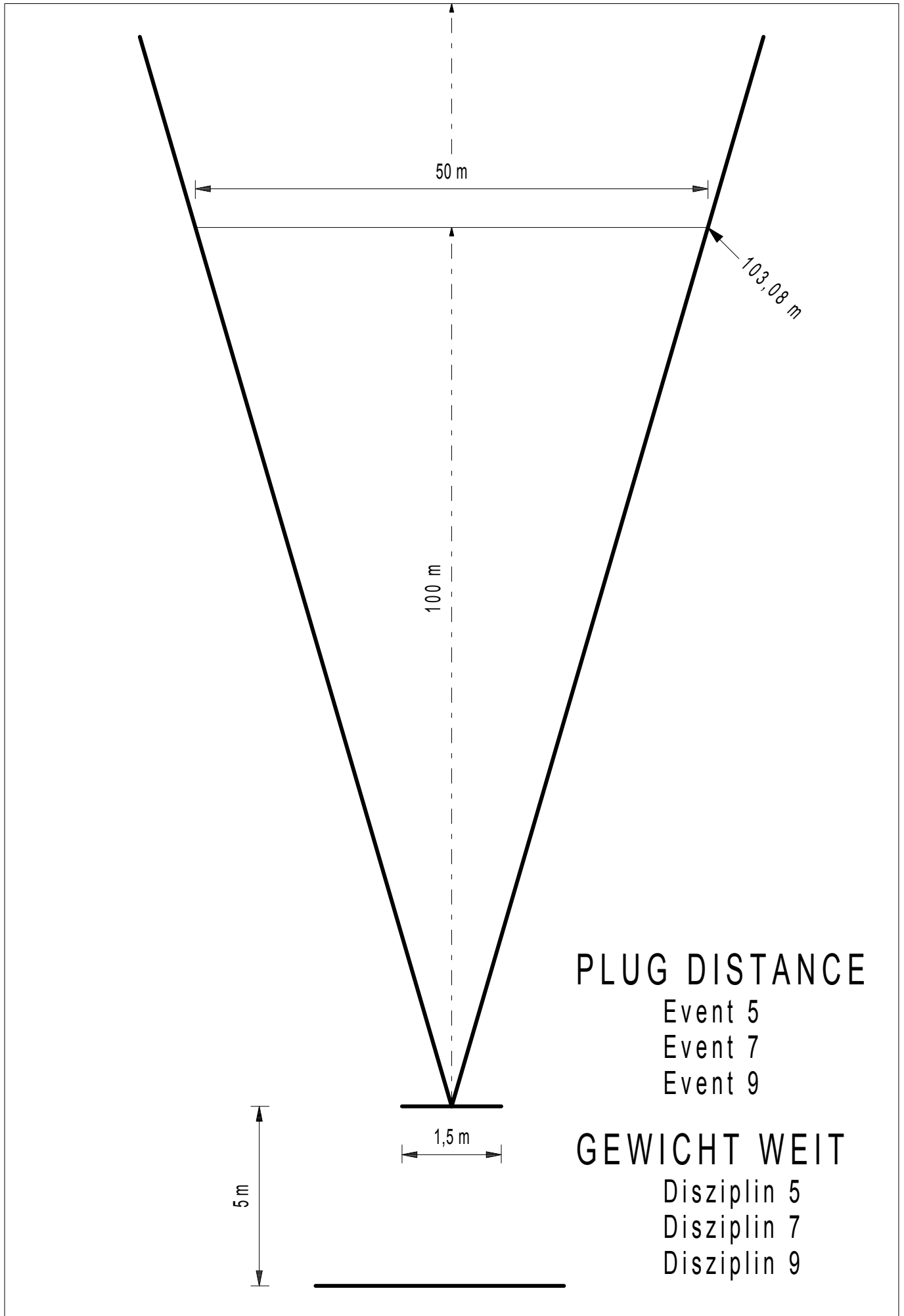
SPINNING ACCURACY ARENBERG TARGET  
Event 3

GEWICHT PRÄZISION  
Disziplin 3



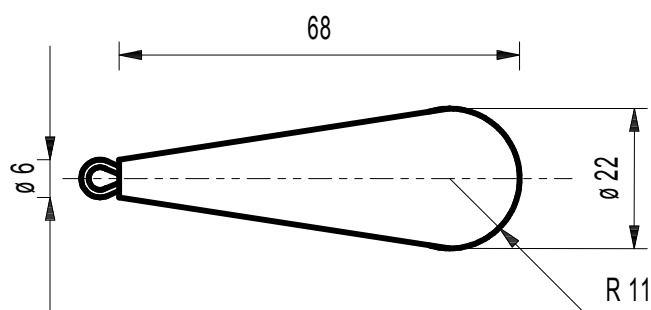
SPINNING ACCURACY  
Event 4

GEWICHT ZIEL  
Disziplin 4



**18 gr Plug**

**18 g Gewicht**



### Deviation

Length	+/- 0,3 mm
Diameter of the head	+/- 0,3 mm
Weight	+/- 0,3 gr.
Colour	white

### Toleranzen

Länge	+/- 0,3 mm
Durchmesser des Kopfes	+/- 0,3 mm
Gewicht	+/- 0,3 g
Farbe	weiss